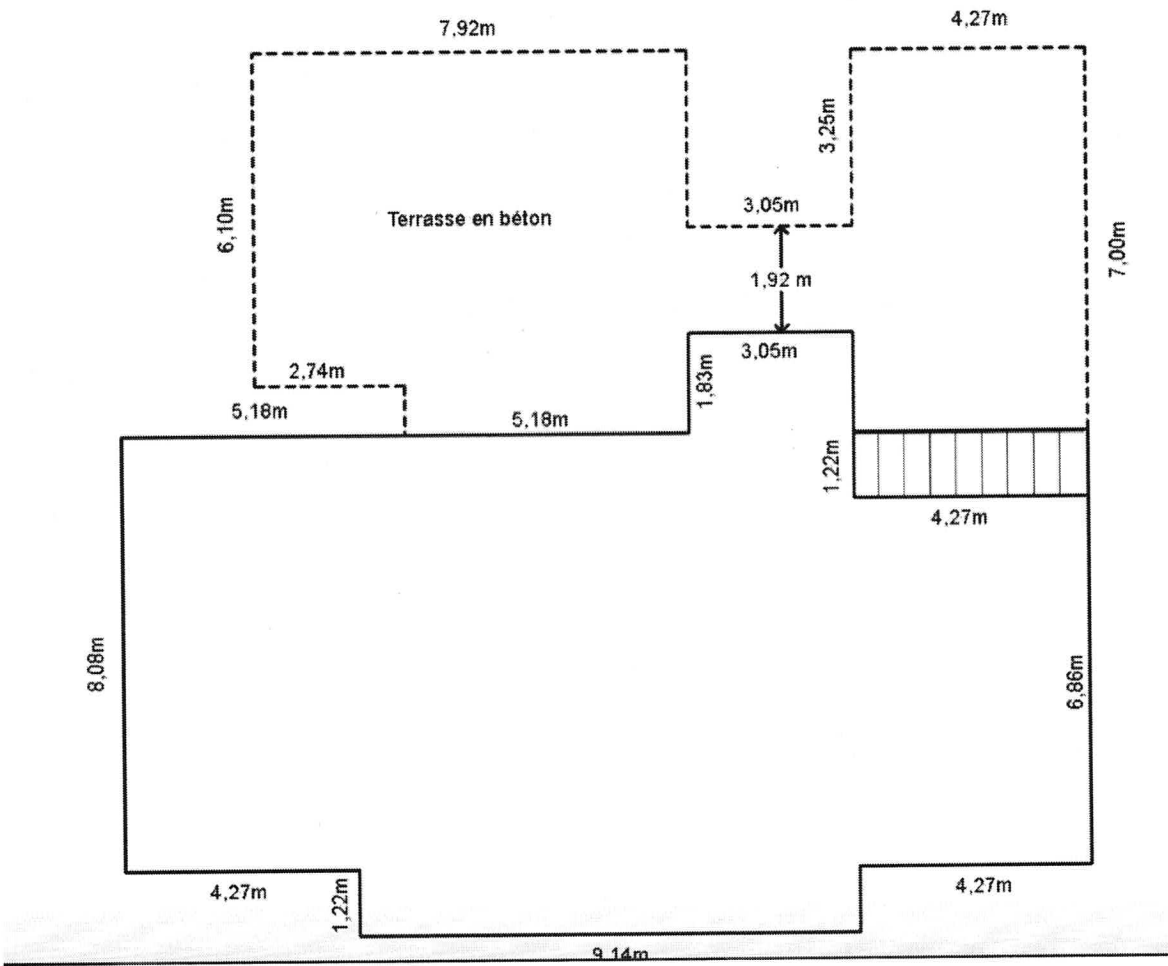


Pièces	Dimensions (approximatives)	Superficie
Bistro	6,10m x 12,19m	74,36m <sup>2</sup>
Boutique	7,32m x 10,36m	75,84m <sup>2</sup>
Cuisine et entrée	4,27m x 4,98m et 1,42m x 2,44m	24,72m <sup>2</sup>
Entreposage isolé	4,88m x 7,32m	35,72m <sup>2</sup>
Salle de bain	2,44m x 6,71m	16,37m <sup>2</sup>
Petit loft	2,44m x 7,62m	18,59m <sup>2</sup>
Atelier	7,32m x 7,32m	53,58m <sup>2</sup>
Remise	Irrégulière	357,24m <sup>2</sup>
Appentis	2,44m x 7,32m	17,86m <sup>2</sup>
Mezzanine	2,44m x 14,33m et de 7,32m x 15,24m	146,52m <sup>2</sup>

Grange - bistro - boutique



Maison